

# ECC™ Quick Start Guide

## Welcome

Welcome to ECC™ - ETC™ Command Center. This guide briefly explains the methods of operation of for the ECC™ and offers useful processes instructors and lab coordinators can employ to improve efficiency when managing simultaneous, multi-room simulations. This document is intended to be used as a quick reference guide. The capabilities of ECC™ go beyond what is covered in this guide.

We encourage you to experiment and ask questions! Our support staff is always available to cover topics not addressed in this guide.

## ECC™ - ETC™ Command Center

The ECC™ - ETC™ Command Center - allows end-users to monitor and control multiple ETC™ recorders from one central location. As such, all of the video feeds from all rooms and lab spaces attached to the ECC™ are displayed on a large monitor. This makes it easy for instructors and lab technicians to monitor the entire training facility and make adjustments to camera angles, as needed, from a single workstation.

Scheduling via KbPort™ WorkFlow™ software

Auto-start, auto-stop recording for each ETC™

Auto-archiving feature

Selectable room audio for monitoring

Labeled camera images for easy control

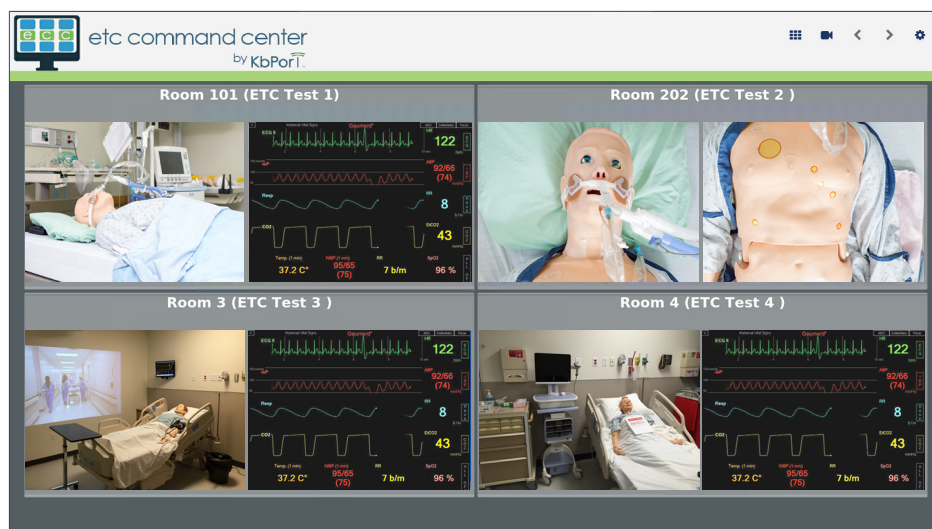
40" to 65" monitor w/mount

Up to 20 rooms displayed

Up to 2 cameras per room

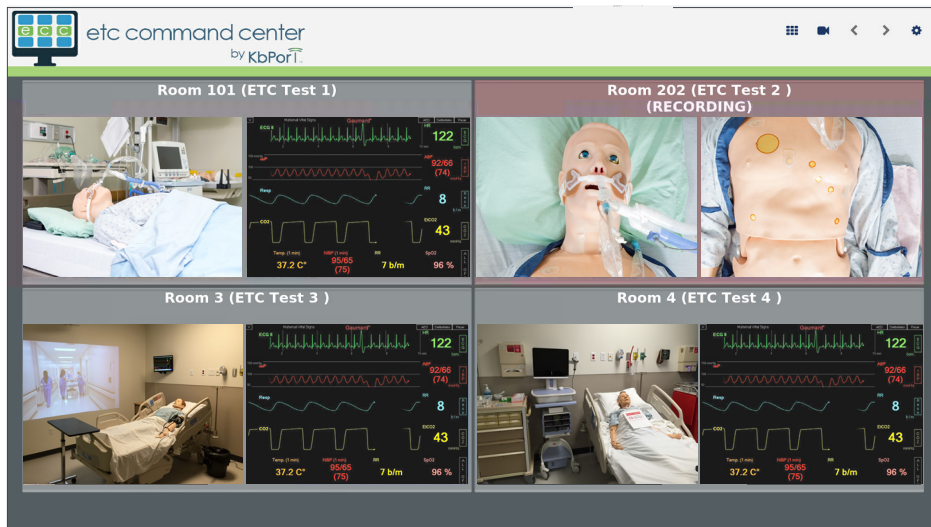
ECC™ software

Standard KbPort™ parts warranty (1-year)



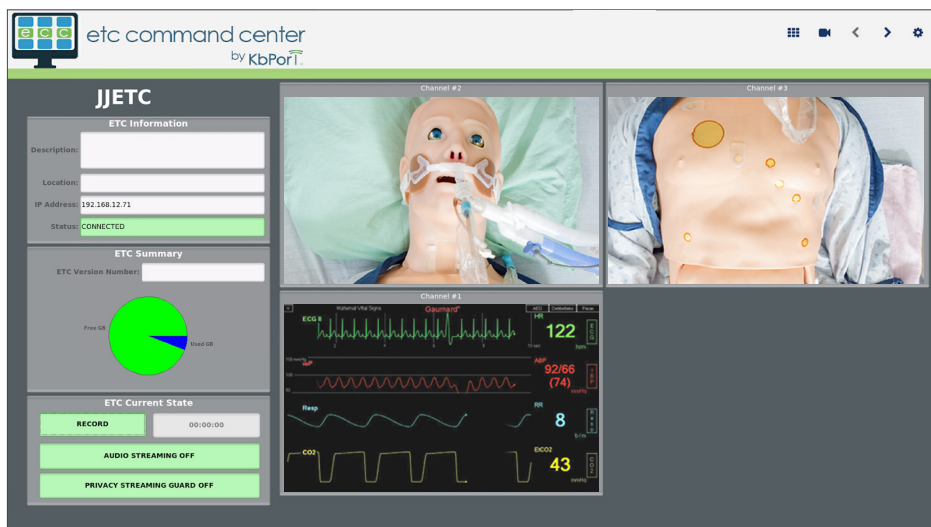
## Recording

When an ETC™ is actively recording, it will be highlighted red and display the “recording” message.



## Individual Recorder View

To view the details and camera feeds for an individual recorder, click on the video feed(s) from that ETC™. From the individual recorder view, the user has access to a variety of information for that system. Information such as recording status, available hard drive space, software version number, and IP address, is displayed in the panels on the left side of the page. Cursor click-and-drag controls are also available for video channels that are from PTZ cameras.



## ETC Current State

Each ECC™ can be controlled from the individual recorder view. Under the *ETC Current State* panel, there are button options that include: **[RECORD]**, **[AUDIO STREAMING]**, and **[PRIVACY STREAMING GUARD]**, which are described below.

### Record

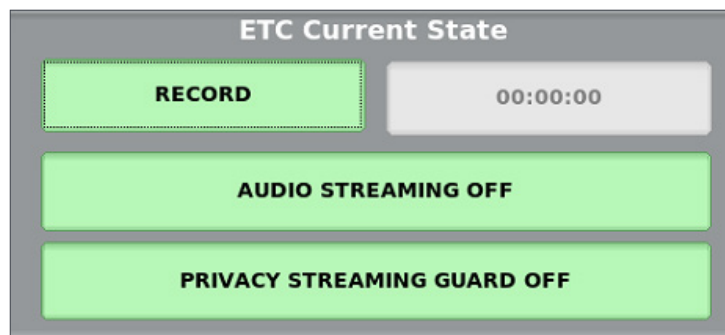
Select **[RECORD]** to start and stop live recording on the selected ECC™.

### Audio Streaming

Select **[AUDIO STREAMING]** to listen in on the streaming audio on the selected recorder.

### Privacy Streaming Guard

Select **[PRIVACY STREAMING GUARD]** can be used to control remote access to the live streaming video. When on, Privacy Streaming Guard disables the live video feed for anyone trying to access the recorder through its webpage.



## Navigation

### Camera

Select **[📹]** to navigate from the main overview screen to the individual recorder screens.

### Arrows

Select **[< >]** to cycle through all attached ECCs.

### Grid

Select **[📊]** to return to the Command Center dashboard.

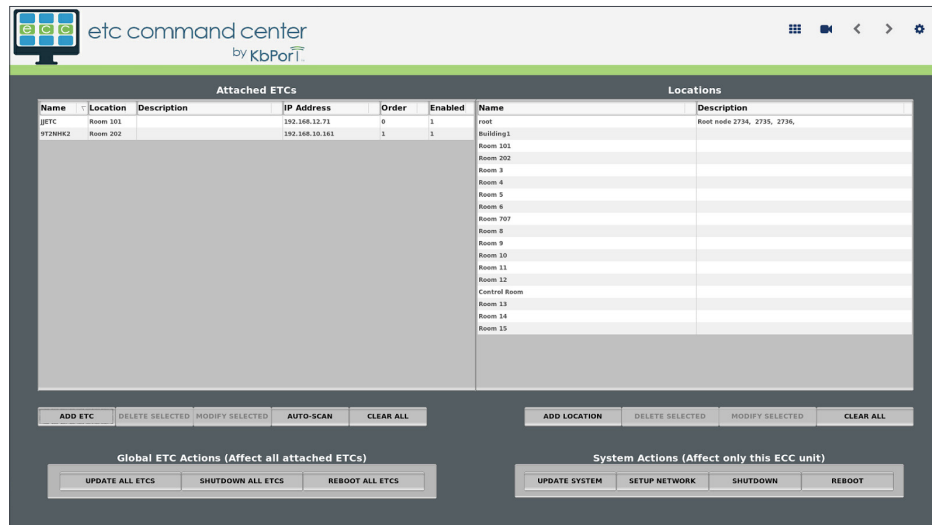
### Settings

Select **[⚙️]** to navigate to the configuration and settings page of the ECC™.



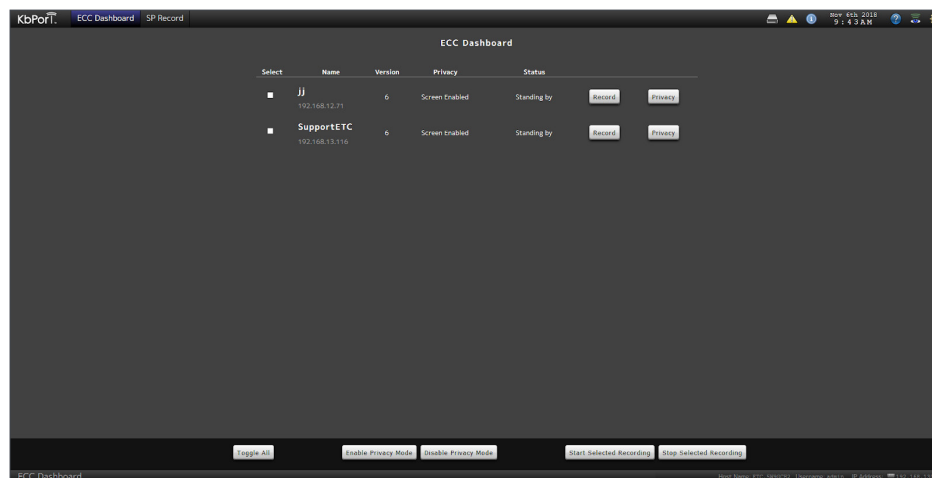
## Global ETC Actions

The attached ETCs should generally remain the same. Using *Global ETC Actions*, a user can update, shutdown, and reboot all ETCs that are attached. *Systems Actions* only control the ECC™ device itself.



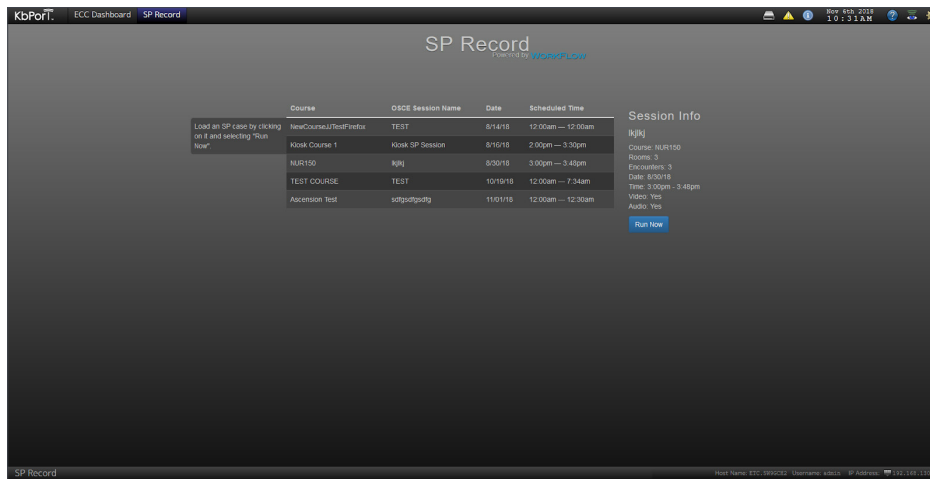
## Web Accessibility

Finally, just like each ETC™, the ECC™ can be accessed via webpage using its IP address as the URL. The webpage view allows users to simultaneously start and stop recording on all attached ETCs.



If the ECC™ is configured as part of a Workflow™ system, this page will show all of the ETCs entered in the Workflow™ locations. In addition, an SP Record™ tab will be visible in the top menu bar. Clicking this tab reveals the SP Record™ interface, which will show up to 5 past and

5 upcoming SP sessions to run via the Workflow™ and SP Record™ system. For more information on using SP Record™ with Workflow™, please consult the Workflow™ User Guide.

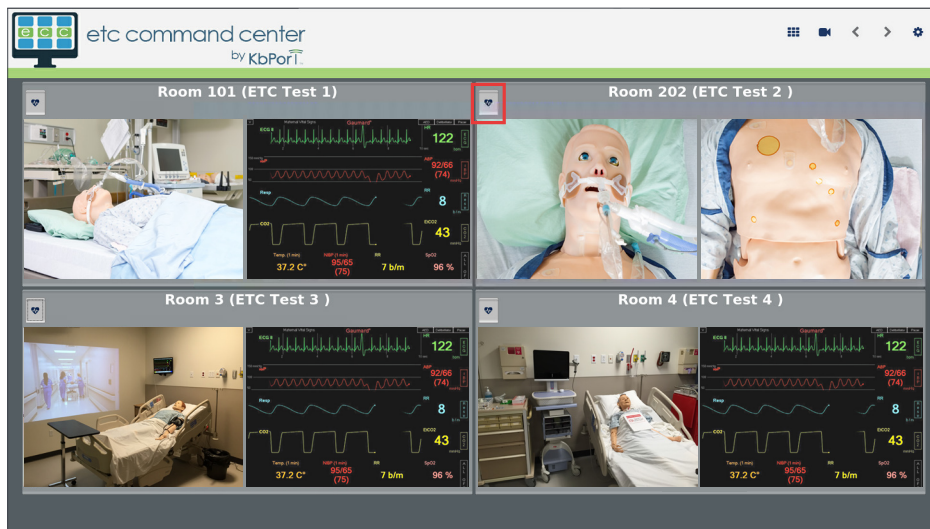


## Patient Monitor View (Add-On Feature)

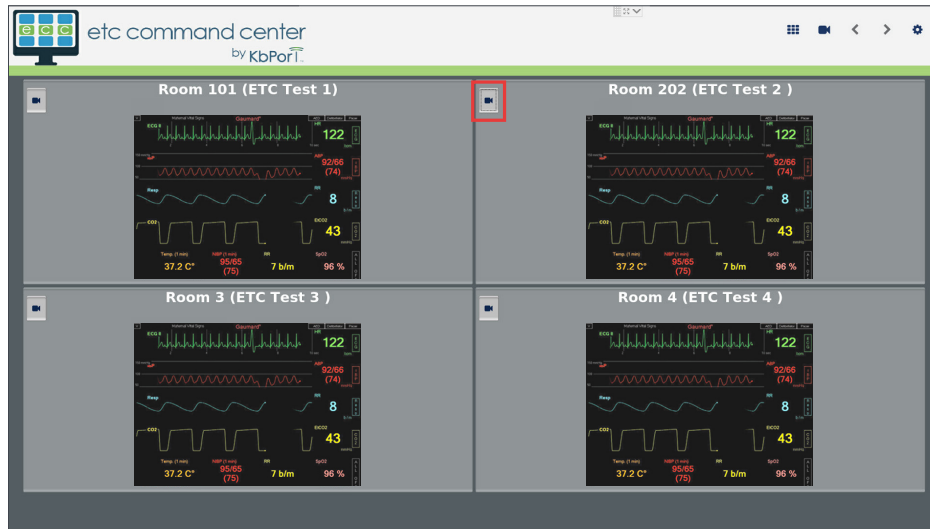
The ECC™ patient monitor view is ideal for continuous patient monitoring from a central location, such as a nurse's station or proctor station. This add-on feature allows you to toggle between patient monitors and all feeds from each ETC™.



The patient monitor view is an add-on feature to the ECC™. Please consult your KbPort™ sales representative for more information.



Selecting the [  ] from your Command Center dashboard allows you to view the patient monitors. To toggle back to the standard view of your ETC™ feeds, simply select [  ].



## Closing Remarks

Our support staff and education consultants are more than happy to help fill in the details of specific features, support the education of how to accomplish desired workflows, and assist with any technical questions you may have.

Thank you,

KbPort™ Simplicity™ Team

